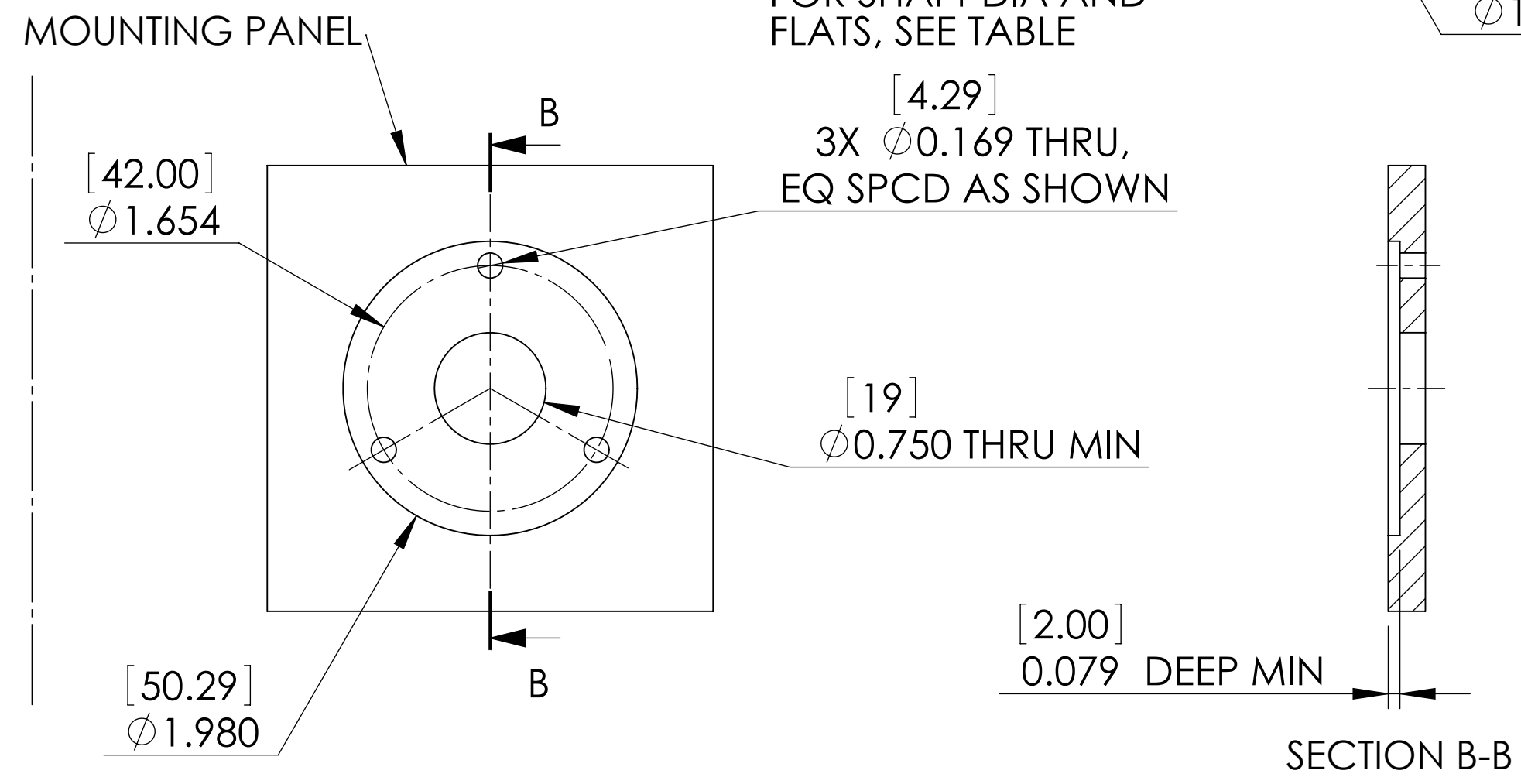
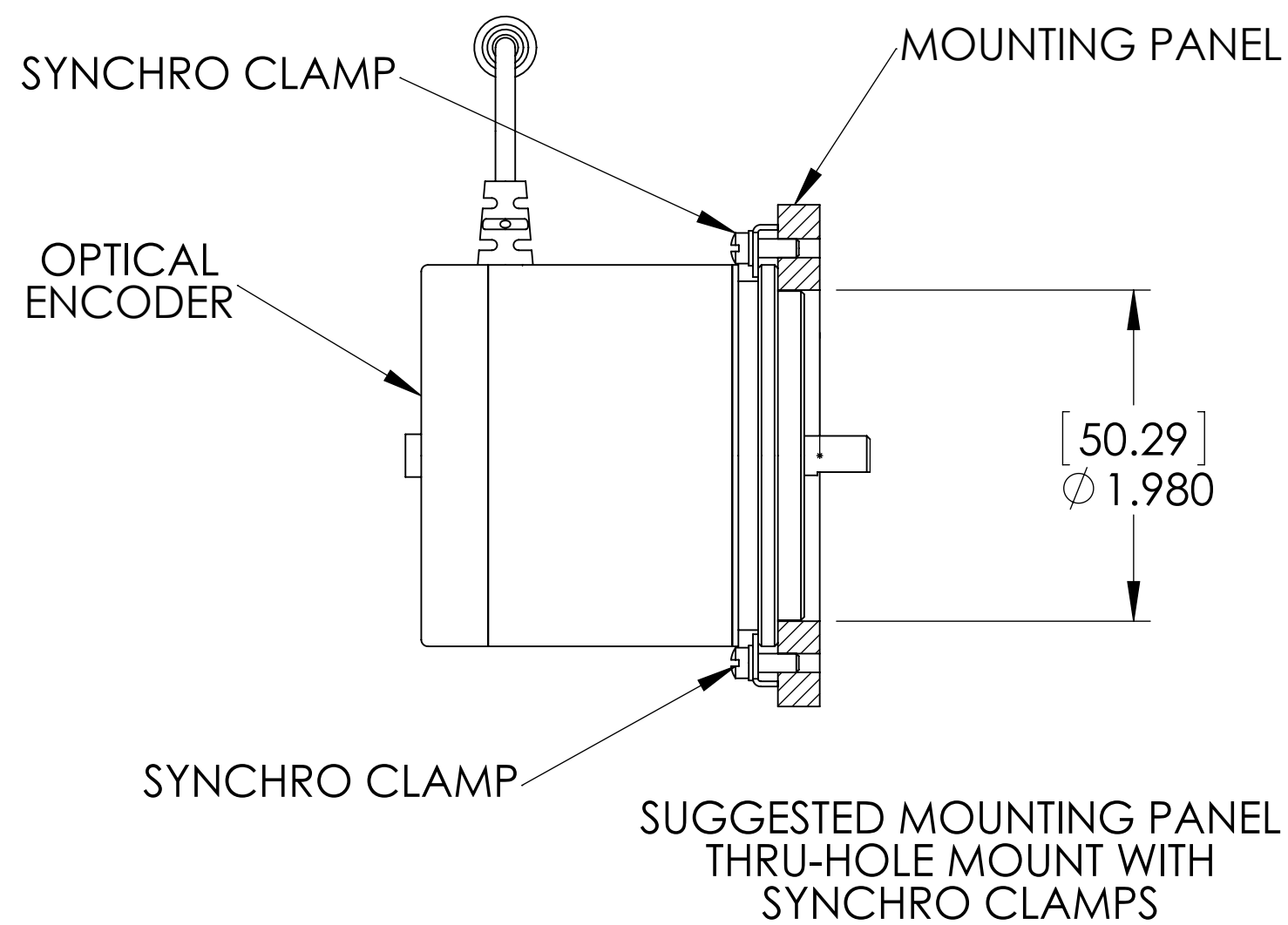
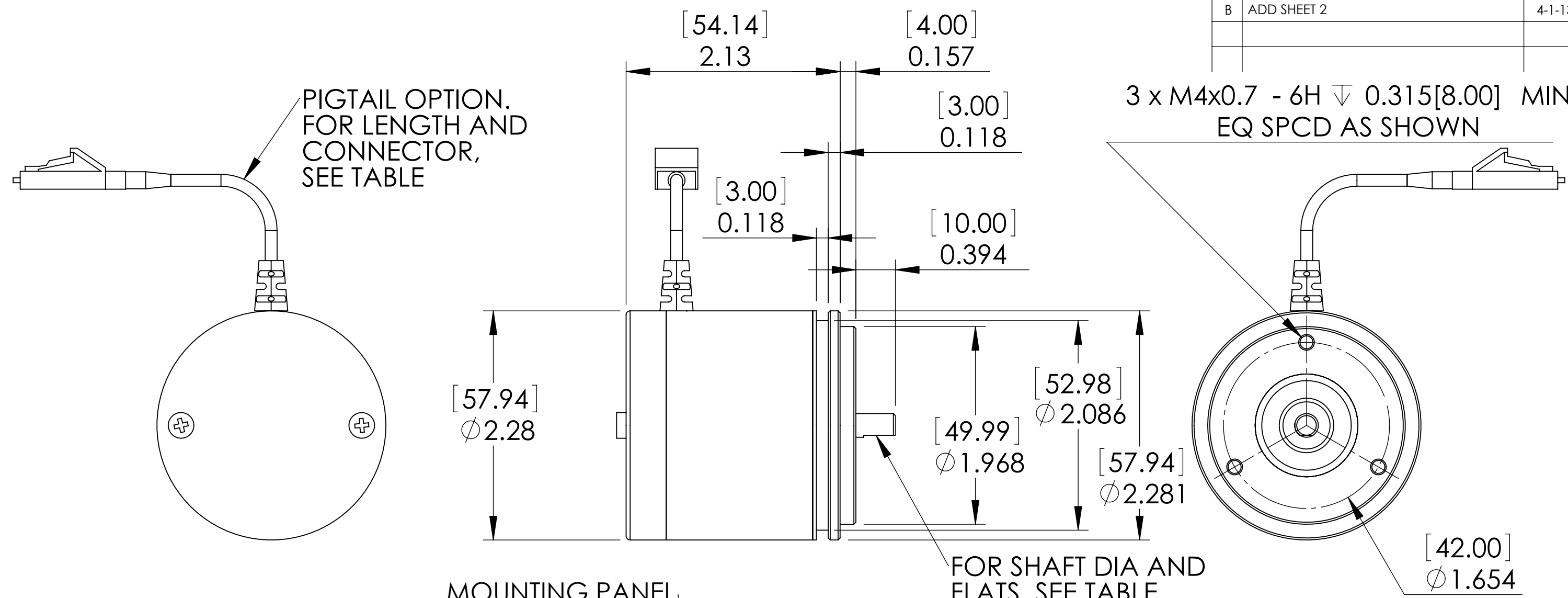


REVISIONS			
REV.	DESCRIPTION	DATE	APPROVED
B	ADD SHEET 2	4-1-13	RGB



PART NUMBER ORDERING CODE

MR322 - D 06 C 1R5

**RESOLUTION**  
 A = 100  
 B = 128  
 C = 256  
 D = 360

**PIGTAIL LENGTH IN METERS**  
 (R = DECIMAL POINT)  
 1R5 = 1.5 METER

**SHAFT SIZE IN MILLIMETERS**  
 6 = 6MM SHAFT  
 (Ø 0.2358 ± .0002 [5.989 ± 0.010]  
 WITH 0.216 [5.50 FLAT])

**CONNECTOR TYPE**  
 C = DUPLEX LC

OTHER SHAFT OPTIONS ARE AVAILABLE

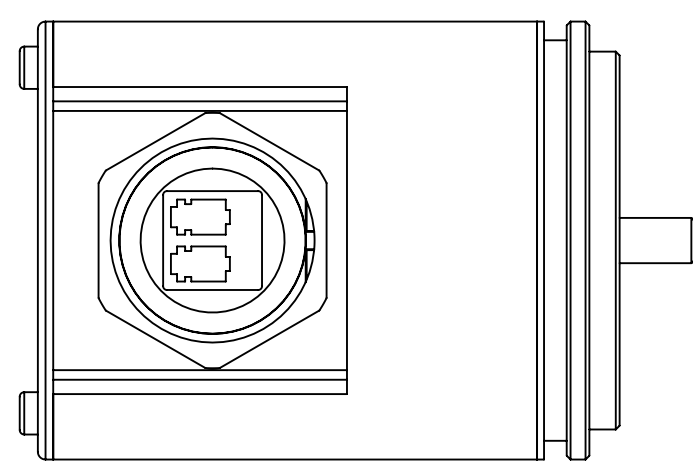
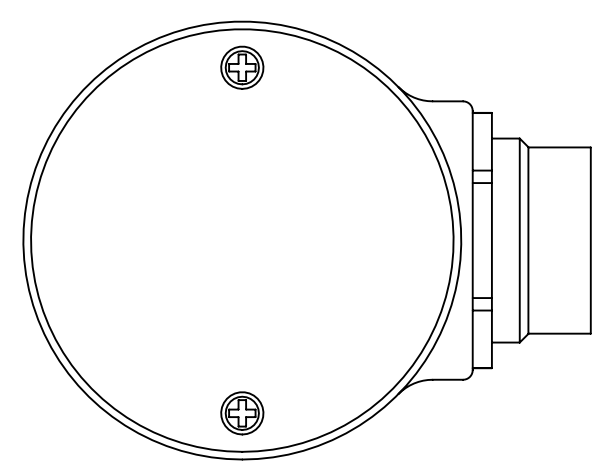
1. ALWAYS USE FLEXIBLE COUPLING WHEN MOUNTING SHAFT TO EXTERNAL EQUIPMENT.
2. WARNING: DO NOT DROP UNIT. DROPPING OR OTHER SEVERE SHOCK IMPACTS MAY DAMAGE UNIT.
3. WARNING: KEEP CONNECTOR COVERS IN PLACE DURING STORAGE, TO PROTECT FIBER OPTIC INTERFACES.

NOTES: UNLESS OTHERWISE SPECIFIED

**PROPRIETARY AND CONFIDENTIAL**  
 THE INFORMATION CONTAINED IN THIS DRAWING IS THE SOLE PROPERTY OF MICRONOR CORPORATION. ANY REPRODUCTION IN PART OR AS A WHOLE WITHOUT THE WRITTEN PERMISSION OF MICRONOR CORPORATION IS PROHIBITED.

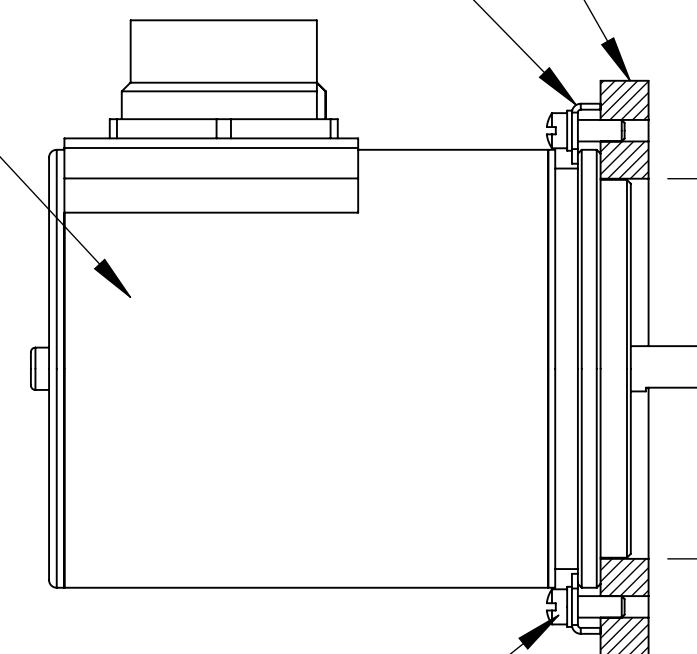
UNLESS OTHERWISE SPECIFIED:		NAME	DATE	MICRONOR INC. NEWBURY PARK, CA (805) 499-0114	
DIMENSIONS ARE IN INCHES (MM)	DRAWN	R BOYER	9-1-11	TITLE: OPTICAL ENCODER DUPLEX LC PIGTAIL	
TOLERANCES: ANGULAR: ± .5° TWO PLACE DECIMAL ± .02 THREE PLACE DECIMAL ± .005 FOUR PLACE DECIMAL ± .0010	CHECKED			SIZE	DWG. NO.
INTERPRET GEOMETRIC TOLERANCING PER:	ENG APPR.			<b>C</b>	MR322-CXX
MATERIAL	MFG APPR.			SCALE: 1:1	WEIGHT:
FINISH	Q.A.				SHEET 1 OF 2
DO NOT SCALE DRAWING	COMMENTS:			REV	<b>B</b>

REVISIONS			
REV.	DESCRIPTION	DATE	APPROVED
B	ADD SHEET 2	4-1-13	RGB



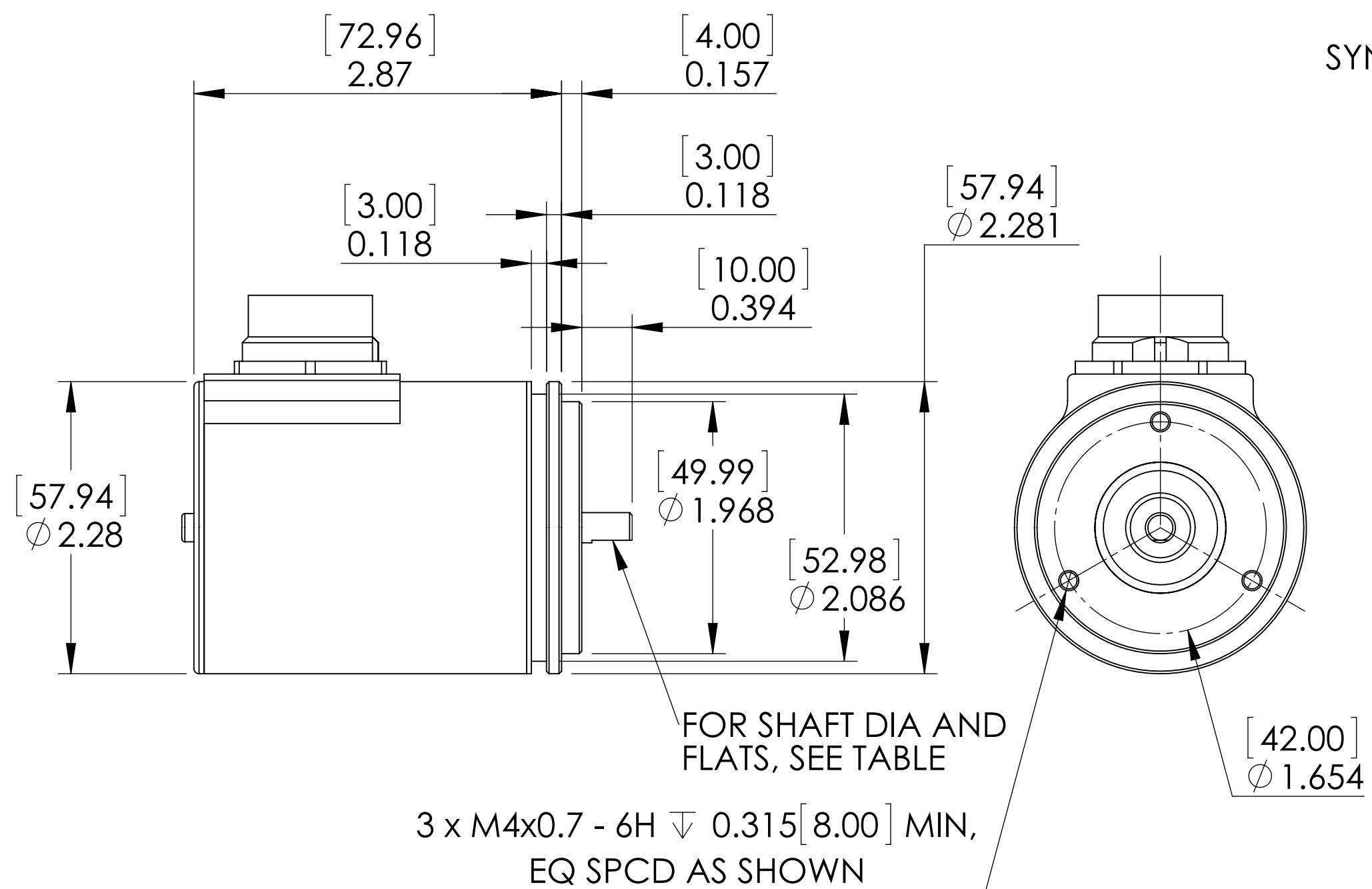
OPTICAL ENCODER

MOUNTING PANEL  
SYNCHRO CLAMP

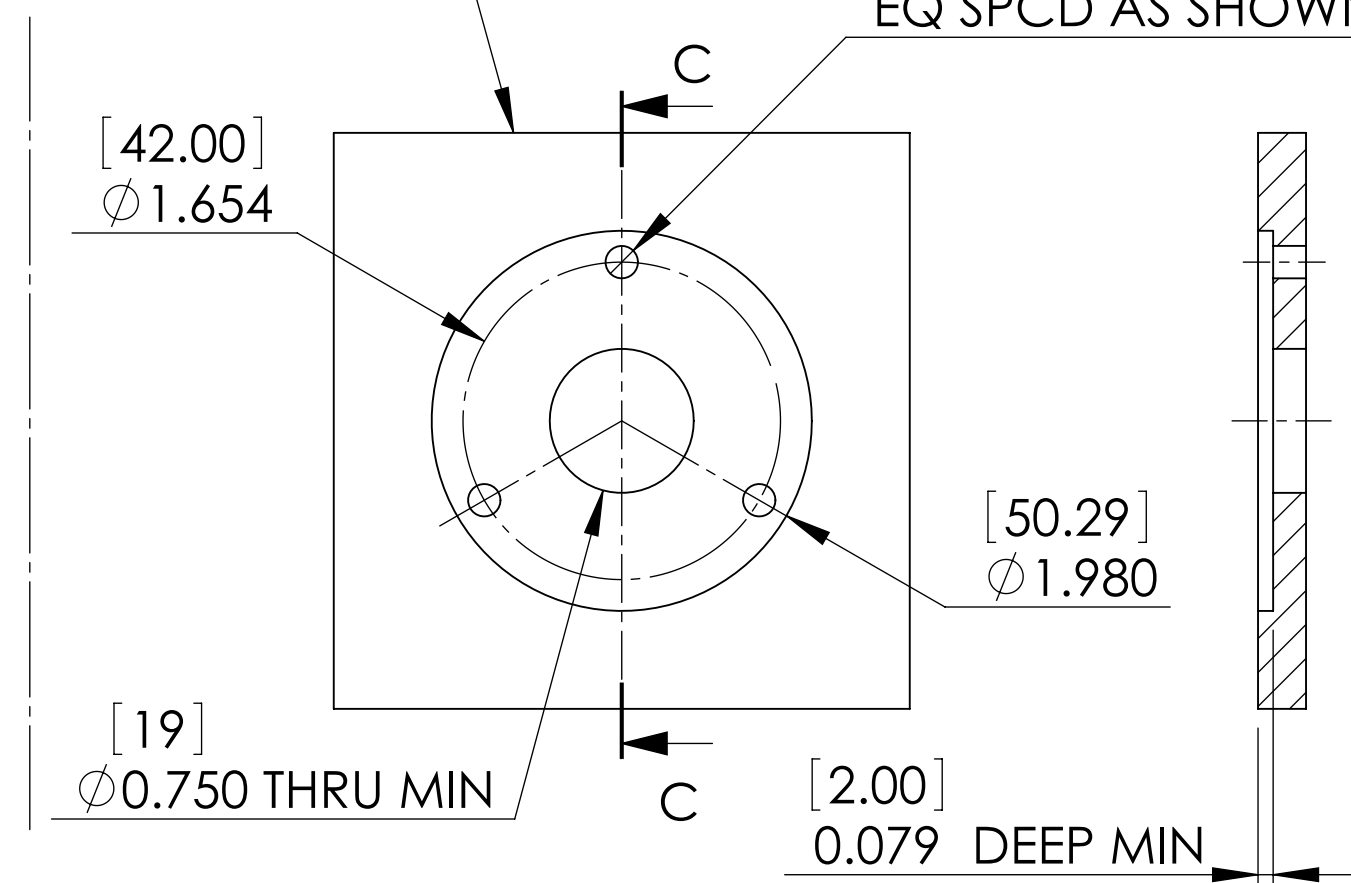


[50.29]  
Ø 1.980

SYNCHRO CLAMP  
SUGGESTED MOUNTING PANEL  
THRU-HOLE MOUNT WITH  
SYNCHRO CLAMPS



MOUNTING PANEL  
3X Ø0.169 THRU,  
EQ SPCD AS SHOWN



SUGGESTED MOUNTING PANEL  
COUNTER-BORED PANEL  
WITH MOUNTING SCREWS

PART NUMBER ORDERING CODE

MR322 - D 06 D00

RESOLUTION  
A = 100  
B = 128  
C = 256  
D = 360

OPTICAL CONNECTOR  
D00 = ODVA INDUSTRIAL LC  
DUPLX CONNECTOR

SHAFT SIZE IN MILLIMETERS  
6 = 6MM SHAFT  
(Ø 0.2358 ± 0.0002 [5.989 ± 0.010]  
WITH 0.216 [5.50 FLAT])

OTHER SHAFT OPTIONS ARE AVAILABLE

3. WARNING: KEEP CONNECTOR COVERS IN PLACE DURING STORAGE, TO PROTECT FIBER OPTIC INTERFACES.

2. WARNING: DO NOT DROP UNIT. DROPPING OR OTHER SEVERE SHOCK IMPACTS MAY DAMAGE UNIT.

1. ALWAYS USE FLEXIBLE COUPLING WHEN MOUNTING SHAFT TO EXTERNAL EQUIPMENT.

NOTES: UNLESS OTHERWISE SPECIFIED

UNLESS OTHERWISE SPECIFIED: DIMENSIONS ARE IN INCHES TOLERANCES: ANGULAR: ± 5° TWO PLACE DECIMAL ± .02 THREE PLACE DECIMAL ± .005 FOUR PLACE DECIMAL ± .0010	DRAWN	R BOYER	4-1-13	MICRONOR INC. NEWBURY PARK, CA (805) 499-0114
	CHECKED			
	ENG APPR.			
	MFG APPR.			
INTERPRET GEOMETRIC TOLERANCING PER:	Q.A.			TITLE: OPTICAL ENCODER ODVA LC
MATERIAL	COMMENTS:			SIZE DWG. NO. REV C MR322-D00 B
SEE NOTES				SCALE: 1:1 WEIGHT: SHEET 2 OF 2
DO NOT SCALE DRAWING				